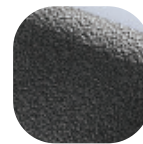
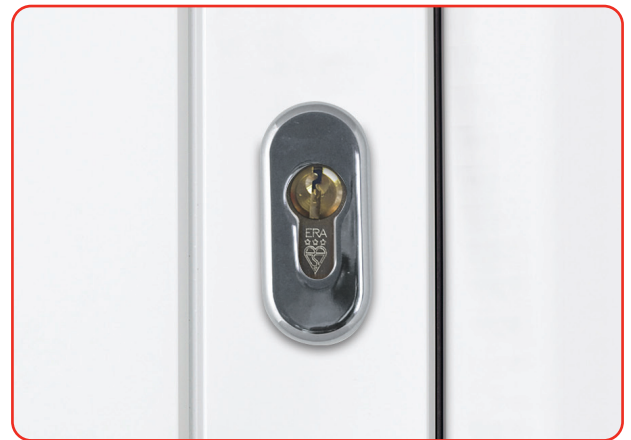


Architectural Oval Cylinder Escutcheon



Features

- **Stylish cylinder escutcheon**
For use with a Euro profile cylinder
- **74mm oval escutcheon**
Perfectly sized to fit most door types
- **Sliding cover fixing for cylinder protection**
Internally fixed prevents access to the cylinder by removing the escutcheon
- **All parts for a door included with one package**
Supplied as a pair with internal and external parts boxed
- **Designed for Composite, Timber and PVCu doors**
To suit all door materials
- **Available in the complete range of Hardex finishes**
Perfectly matching to the full Fab&Fix range of products
- **Face Fitted**
Suitable for all locking mechanisms



Antique
Black



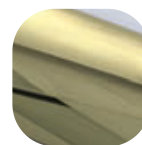
White



Black



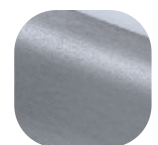
Hardex
Chrome



Hardex
Gold



Hardex
Bronze



Hardex
Graphite

Architectural Oval Cylinder Escutcheon

Ordering Details

Architectural Oval Cylinder Escutcheon

Finish	74mm Oval Part No.
Hardex chrome	4F052
Hardex Bronze	4F053
Hardex Gold	4F054
Hardex Graphite	4F055
Antique Black	4F056
White	4F050
Black	4F051

Technical Information

Corrosion resistance

Meets the requirements of BS EN 1670:2007 Grade 5 (480 hours)

Material Specification

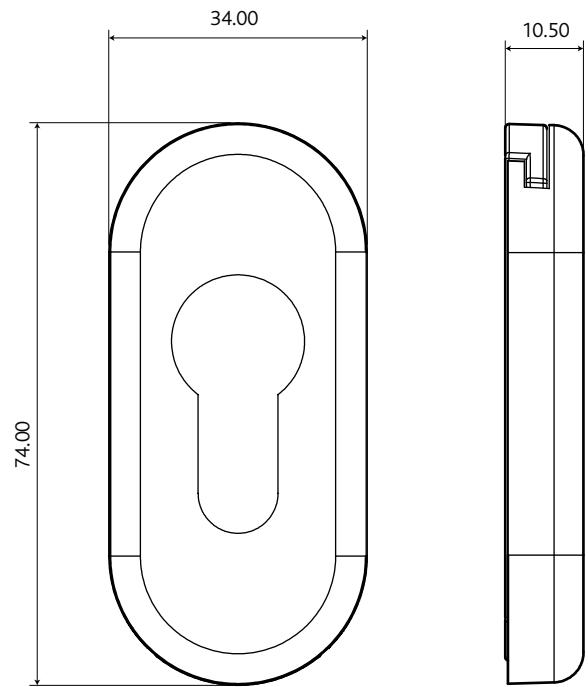
Escutcheon:	High quality zinc
Coatings:	Hardex Chrome, Hardex Gold, Hardex Bronze, Hardex Graphite, White, Black and Antique Black

Maintenance

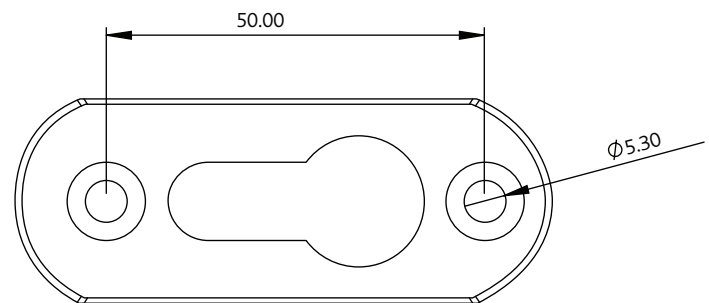
All moving parts should be lightly lubricated using a light non-acidic mineral oil (e.g. "3 in 1") twice per year and the surface cleaned with a soft damp cloth. The product may need to be adjusted and fixings tightened to ensure a satisfactory operation.

Packaging

Escutcheons – Internal and external parts, individually boxed with care instructions. 48 escutcheons in an outer box.



Internal Plate



All dimensions are in mm.

Fab&Fix reserves the right to change specification without notice. It is the responsibility of the door manufacturer to ensure that the finished product meets any required safety and performance specification