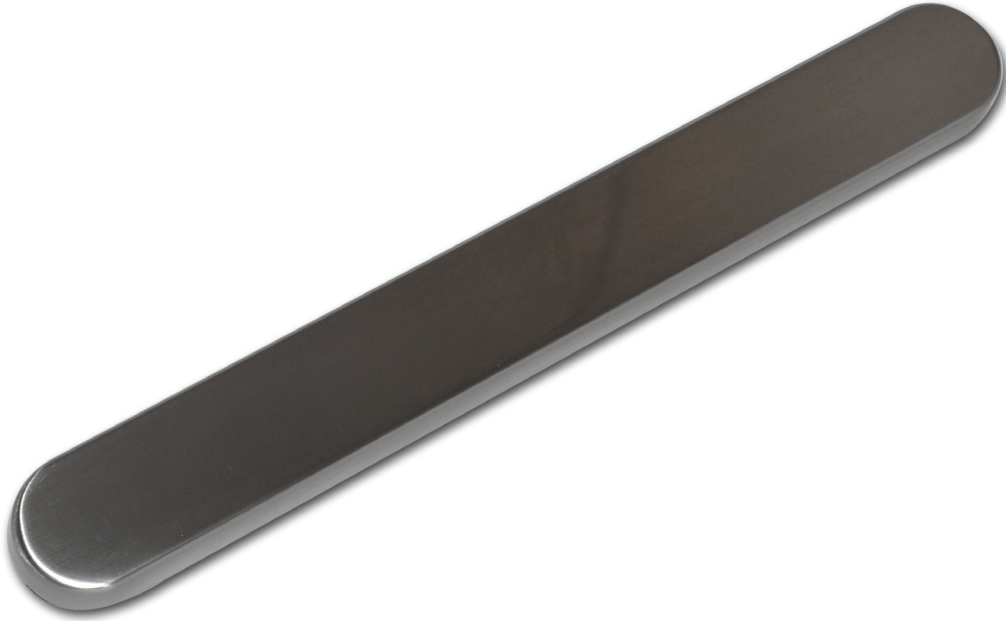


### Balmoral Exterior Blank Plate



### Features

- **Solid die cast construction**  
Sturdy feel
- **Flexible purpose component**  
Enables all aspects of a job to be completed as a perfectly matching set
- **Baseplate common with all Balmoral handles**  
Same routing detail regardless of product variant chosen



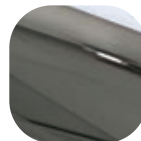
Hardex Chrome



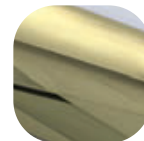
Hardex Satin



White



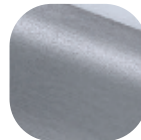
Hardex Bronze



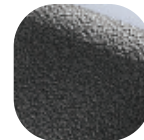
Hardex Gold



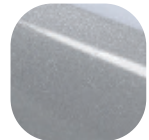
Black



Hardex Graphite



Antique Black



Silver

### Balmoral Exterior Blank Plate

#### Ordering Details

##### Product

**Balmoral Exterior Blank Plate**

Finish	Part No.
--------	----------

Hardex Chrome	1D451
Hardex Satin	1D452
Hardex Bronze	1D453
Hardex Gold	1D455
Hardex Graphite	1D458
Antique Black	1D456
White	1A250
Black	1A251
Silver	1A252

#### Technical Information

##### Corrosion resistance

Meets the requirements of BS EN 1670:2007 Grade 5 (480 hours)

##### Material Specification

Backplate:	High quality Zinc for all Hardex finishes and Antique Black. High quality Aluminium for White, Black and Silver finishes
Coatings:	Hardex Chrome, Hardex Satin, Hardex Bronze, Hardex Gold, Hardex Graphite, Antique Black, White, Black and Silver

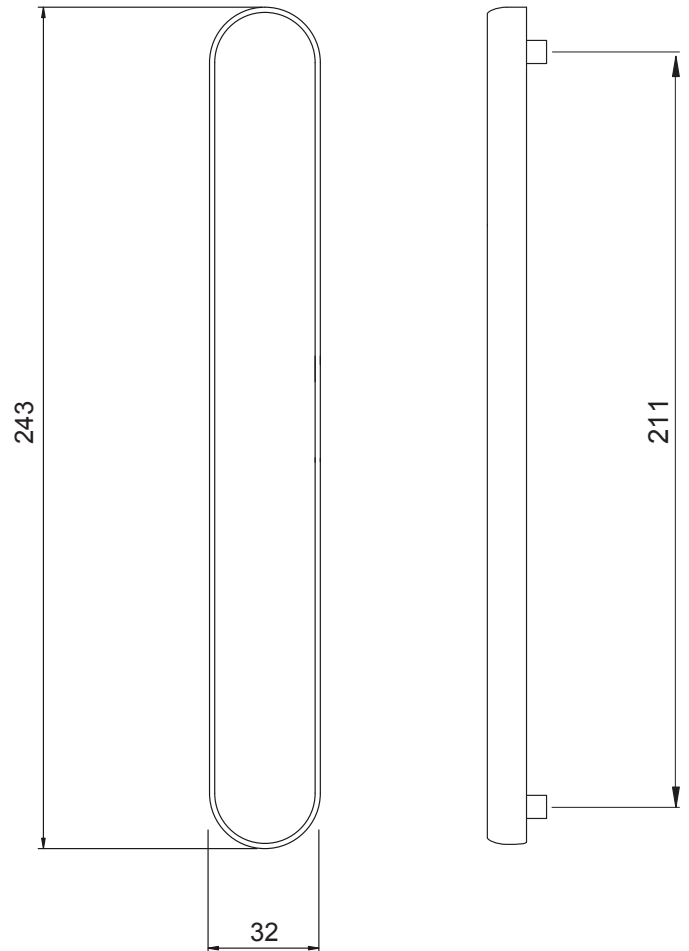
#### Packaging

##### Handles

Individually bagged.  
15 plates in an outer box.

#### Maintenance

For continued protection of the quality finish and appearance, Fab&Fix advise routine cleaning of all our external hardware. Moving parts should also be lightly lubricated at least twice a year. This procedure is particularly essential if products are used within a 25-mile radius of coastal areas or close proximity to building sites or large industrial areas, where more frequent cleaning may be required to prevent the accumulation of corrosive contaminants.



All dimensions are in mm and are nominal.  
Fab&Fix reserves the right to change specification without notice  
It is the responsibility of the door manufacturer to ensure that the finished product meets any required safety and performance specification.