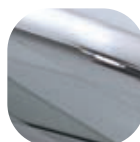


Nu Lion's Head

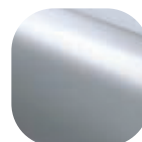


Features

- **Patented face fixing plate works with all major door materials**
Easy installation; no need to use fixing bolts or to drill through the door
- **Classic design**
Create an elegant front door



Hardex
Chrome



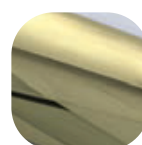
Hardex
Satin



White



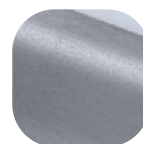
Hardex
Bronze



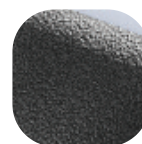
Hardex
Gold



Black



Hardex
Graphite



Antique
Black

Nu Lion's Head

Ordering Details

Product

Nu Lions Head Knocker

Finish	Part No.
White	4A400
Hardex Chrome	4A401
Hardex Satin	4A402
Hardex Bronze	4A403
Hardex Gold	4A405
Hardex Graphite	4A408
Antique Black	4A406

Technical Information

Corrosion resistance

Meets the requirements of BS EN 1670:2007 Grade 5 (480 hours)

Material Specification

Knocker:	High quality Zinc
Coatings:	Hardex Chrome, Hardex Satin, Hardex Bronze, Hardex Gold, Hardex Graphite, Antique Black and White

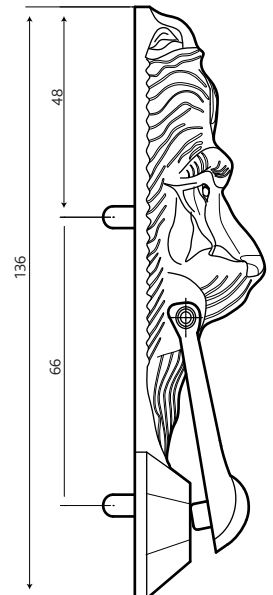
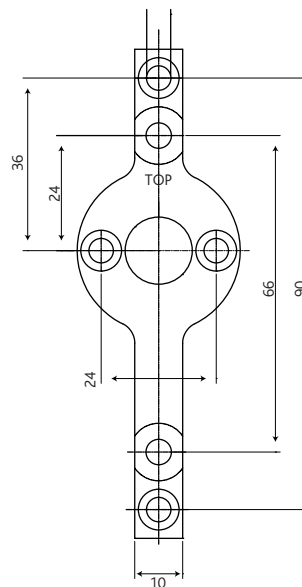
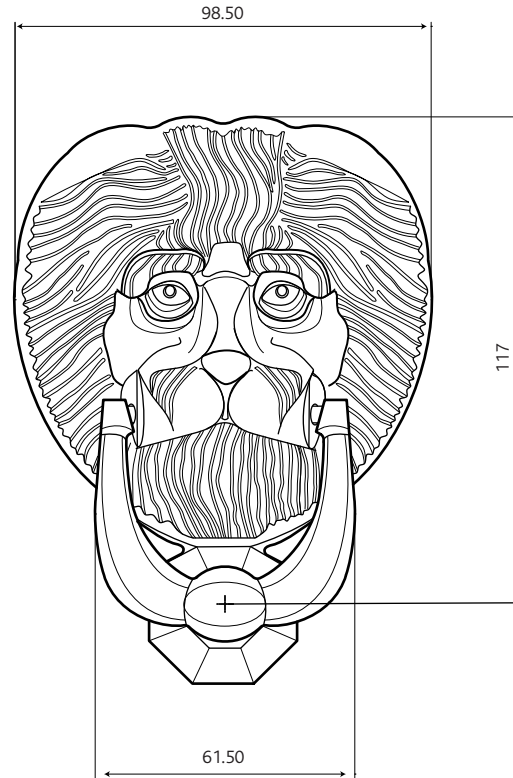
Maintenance

For continued protection of the quality finish and appearance, Fab&Fix advise routine cleaning of all our external hardware. Moving parts should also be lightly lubricated at least twice a year. This procedure is particularly essential if products are used within a 25-mile radius of coastal areas or close proximity to building sites or large industrial areas, where more frequent cleaning may be required to prevent the accumulation of corrosive contaminants.

Packaging

Lion's Head Knocker

Individually boxed with fixing bracket and care instructions.
20 knockers in an outer box.



All dimensions are in mm and are nominal.
Fab&Fix reserves the right to change specification without notice.
It is the responsibility of the door manufacturer to ensure that the finished product meets any required safety and performance specification.