

ICENI  
AURA  
ALUMINIUM

[www.AURA-ALUMINIUM.CO.UK](http://www.AURA-ALUMINIUM.CO.UK)





ICENI  
AURA

# WHAT IS AURA?

A brand conceived from the belief in ourself.

AURA is the suite of aluminium products we manufacture from Sheerline profile.

An innovative and new approach to aluminium makes it easy to understand, and install. The only system to fully comply with new government regulations on heat loss.

## Why the name?

Aura is the new high-standard brand all others will aspire to.

We believe superior manufacturing elevates our product above nearly all other aluminium products.

And, feel that when you need the best, Aura will be your premier thought.

The same products, transcending others by simply making them better.





THE REASONS 06

OVERVIEW 08

THE AURA RANGE 12

CLASSIC WINDOW 18

BI-FOLD DOORS 20

PATIOS DOORS 24

ENTRANCE DOORS 28

## TECHNICAL

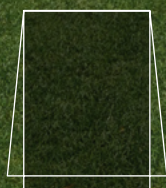
TECHNICAL AREA 32

PRODUCT SPEC 39

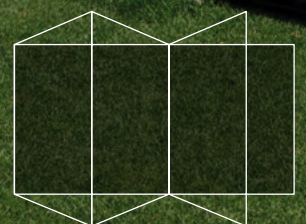


# THE PRODUCTS

## WINDOWS



## BIFOLDING DOORS

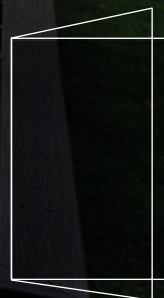
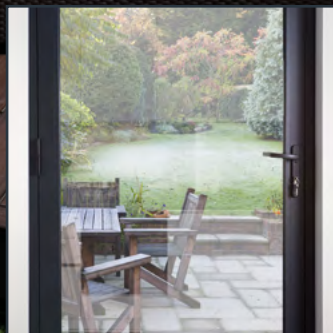




ICENI  
**AURA**  
ALUMINIUM

PATIO DOORS

ENTRANCE DOORS





# THE REASONS

## YOUR PROJECT NEEDS AURA

### A VERSATILE SYSTEM

Designed for light and airy interiors, this system is available as **casement, fixed or French windows**.

A range of outer frame sizes accommodate different plaster lines and window reveals – ensuring a perfect, neat finish.

**Slim sashes** allow more light into any home, expanding the sense of space.

**THERMLOCK<sup>®</sup>** technology inside

### THERMLOCK<sup>®</sup> TECHNOLOGY

All AURA products feature a unique Thermlock<sup>®</sup> technology; closed-cell, insulating chambers, inside every window and door work as a thermal break for class-leading thermal performance.

### COLOUR

Seven standard colours or project your individuality with a bespoke colour. You can choose a different colour for the interior.

### WEATHERPROOF INSTALLATIONS

Co-extruded weather-seals on clip-together sills means minimal silicone sealing, saving time, and money to create a consistent and reliable install.



### SECURED BY DESIGN

For added peace of mind choose a laminate glass optional upgrade – for SBD accreditation; the official UK Police initiative ‘designing out crime’ through physical security.



## THE DESIRE FOR CHOICE.

**AURA Aluminium** products will meet – and exceed – demands of multiple applications.

Everything from heavy duty and light commercial new builds, to large-scale refurbishment projects and residential new builds can be supplied.

Confidence in our superiorly manufactured products, in their performance and quality comes as standard.

THE SOLUTION IS **AURA**.

## SECURITY

**Exceptional security built into every window and door.**

A full depth eurogroove enables the latest high security, multipoint locking mechanisms – helping keep you and your home safe and secure.

Additional features like unique hinge protectors also help create exceptional levels of security.

The clever integrated design ensures all lock-cases are fully enclosed, meaning the glazing or beading areas of the window/door aren't affected – which weakens the frame's integrity.

**EXTRA PEACE OF MIND AS STANDARD.**

## PATENTED CORNER JOINTS

**Every window tuned to perfection.**

This patented<sup>†</sup> jointing method creates perfectly square corners and exceptionally strong frames which maximises aluminium's inherent strength.

The strong threaded rods bind the corners together tightly eliminating any misalignment.

**A PERFECT BALANCE OF QUALITY AND UNDERSTATED REFINEMENT.**



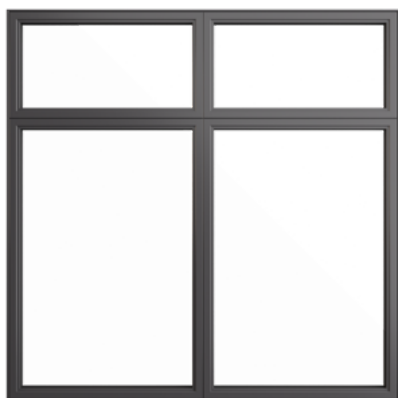
<sup>†</sup>Patent registration number: GB2569209 \*Subject to product type and hardware specification.



# OVERVIEW

Our manufactured aluminium products





## AURA CLASSIC

Traditional ultra-slim  
steel-echoed style

### UNIQUE FEATURES:

- Slimmest sightlines – 59mm
- High-security beadless design
- Multipoint locking
- Mitred interior look

### THERMAL U VALUE:

Double glazed 1.4 W/m<sup>2</sup>K

Triple glazed 1.1 W/m<sup>2</sup>K

THRESHOLDS: 4

SASH STYLES: 2

STANDARD COLOURS: 7

PRODUCT TYPES:

Casement, fixed, French windows

**1.4**  
W/(m<sup>2</sup>K)  
U-VALUE  
DOUBLE GLAZED

**1.1**  
W/(m<sup>2</sup>K)  
U-VALUE  
TRIPLE GLAZED

### FEATURES AS STANDARD:

- Thermlock® multi-chamber thermal break
- 7 colours, dual colour, bespoke colour
- Patented corner construction method
- Secure By Design options on all products



## AURA PRESTIGE

Versatile, thermally  
efficient windows

### UNIQUE FEATURES:

- Most thermally efficient
- Full depth Eurogroove

### THERMAL U VALUE:

Double glazed 1.3 W/m<sup>2</sup>K

Triple glazed 0.9 W/m<sup>2</sup>K

THRESHOLDS: 4

SASH STYLES: 2

STANDARD COLOURS: 7

PRODUCT TYPES:

Casement, fixed, French windows

**1.3**  
W/(m<sup>2</sup>K)  
U-VALUE  
DOUBLE GLAZED

**0.9**  
W/(m<sup>2</sup>K)  
U-VALUE  
TRIPLE GLAZED



## PRODUCT OVERVIEW

# AURA PRESTIGE DOORS



## BIFOLD

Panoramic fold and slide doors

### UNIQUE FEATURES:

- Up to 7 panes  
*Including 4/2/2 configurations*
- Single and French door options
- Max 6.5 x 2.6m
- Max 1.2m sash width
- Max 120kg sashes
- 80mm deep outer frame
- 72mm deep sashes
- Slim 138mm sash to sash sightlines
- Up to 44mm triple glazing  
*36mm on stepped sashes*

### THERMAL U VALUE:

Double glazed 1.4 W/m<sup>2</sup>K

Triple glazed 1.0 W/m<sup>2</sup>K

### THRESHOLDS: 3

COLOURS: 7 standard

### SASH STYLES: 2

### PRODUCT TYPES:

Bifold doors, single and French doors

## PATIO

Panoramic lift and slide patio doors

### UNIQUE FEATURES:

- Double and Triple Track options
- Max 6.5 x 2.5m
- Max 400kg Sash
- Slim 106mm Frame to Sash Sightline
- Standard 80mm Interlock Sightline
- Ultra Slim 52mm Interlock Option  
*Suitable for most twin-track doors*
- Up to 44mm Triple Glazing  
*36mm on stepped sashes*

### THERMAL U VALUE:

Double glazed 1.4 W/m<sup>2</sup>K

Triple glazed 1.0 W/m<sup>2</sup>K

### THRESHOLDS: 3 weather-rated

COLOURS: 7 standard

### PRODUCT TYPES:

Dual- and triple-track sliding doors

## ENTRANCE

Thermally efficient glazed entrance doors

### UNIQUE FEATURES:

- Midrail letterbox options
- Single and French doors
- Flag hinge styling

### THERMAL U VALUE:

Double glazed 1.4 W/m<sup>2</sup>K

Triple glazed 1.0 W/m<sup>2</sup>K

### FEATURES AS STANDARD:

- Thermlock® multi-chamber thermal break
- Seven colours, dual colour, bespoke colour
- Patented corner construction method
- Secure By Design options on all products

**1.4**  
**W/(m<sup>2</sup>K)**  
**U-VALUE**  
DOUBLE GLAZED

**1.0**  
**W/(m<sup>2</sup>K)**  
**U-VALUE**  
TRIPLE GLAZED







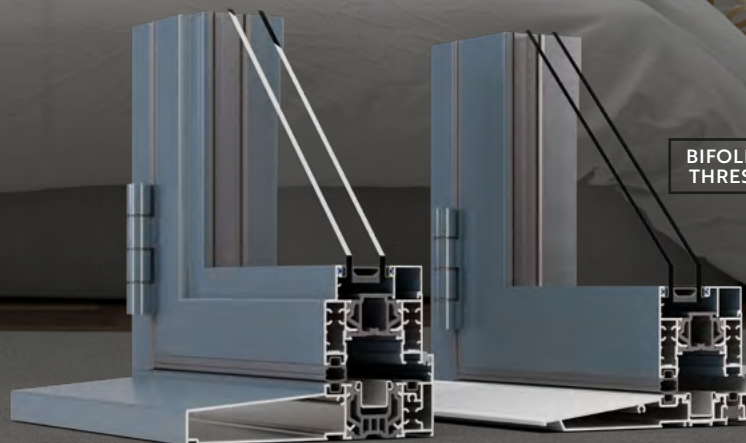
# AURA RANGE

Crisp detail for a refined and architectural look

**PRODUCTS IN THE  
PRESTIGE RANGE:**

WINDOWS  
RESIDENTIAL DOORS  
TILT & TURN WINDOWS  
BIFOLD DOORS  
PATIO DOORS

BIFOLD DOOR  
THRESHOLDS







## PATENTED CORNER CONSTRUCTION

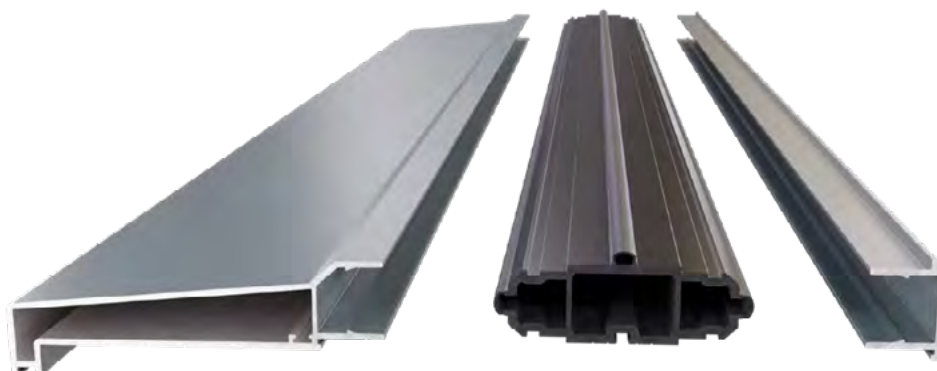
(PICTURED ABOVE)

This patented construction method using threaded screws to bind corners tightly together – eliminates misaligned corner issues that can occur on ordinary aluminium frames.

## SUPERIOR WEATHER PERFORMANCE

(BELOW)

Co-extruded weather-seals on clip-together sills and other ancillaries means there's minimal need for silicone sealing, saving time, money and creating more consistently reliable weatherproof installations.





# COLOURS

Your project's Aura

COLOURS





## DUAL COLOURS AS STANDARD

Colour is as important on the inside as it is outside and that's why we offer any dual colour options on all **AURA** aluminium products.

## STANDARD COLOURS

Bespoke colours available



**Please note:** Due to variables in the printing process and disparity in screen colour displays, these colours are intended to be used as a guide only.



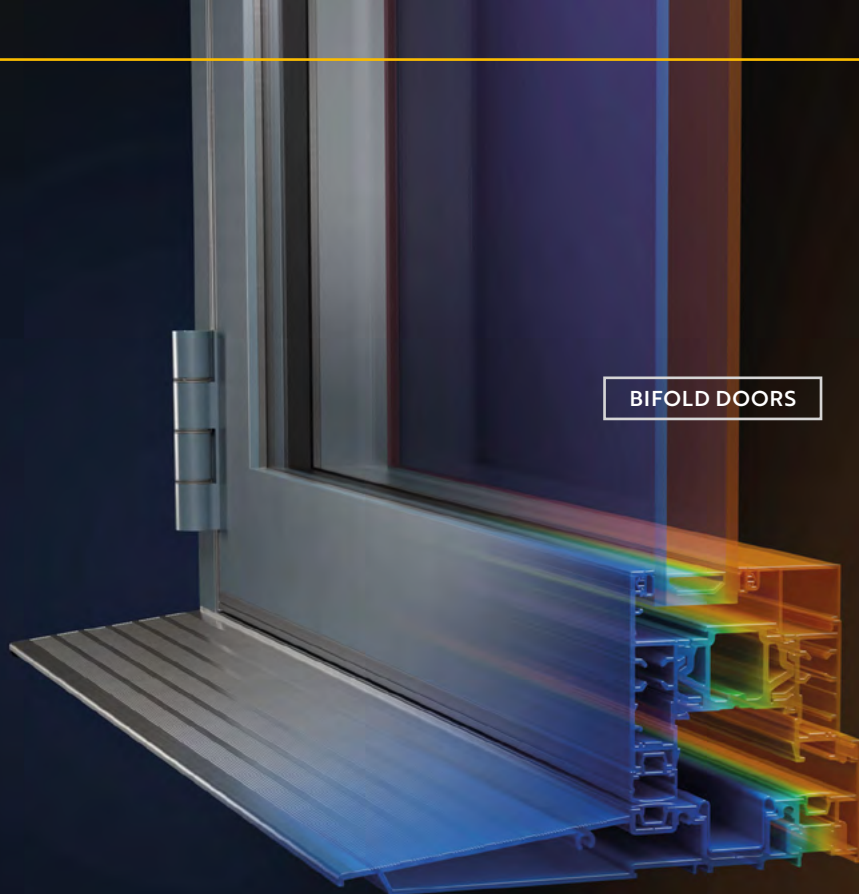
# ENERGY EFFICIENCY

## Thermlock® technology

Hidden inside is an innovative Thermlock® multi-chamber thermal design. Insulating chambers act as a thermal break and work with high-performance glazing creating class-leading thermal performance, superior to traditional polyamide.

**Thermlock®** technology inside

BIFOLD DOORS



THERMAL TRANSMITTANCE, OR **U-VALUE**, MEASURES THE RATE OF TRANSFER OF HEAT

THE BETTER INSULATED A WINDOW IS THE LOWER THE U-VALUE

### CLASSIC WINDOWS

**1.4**  
**W/(m²K)**  
**U-VALUE**

Double glazed

### PRESTIGE WINDOWS BIFOLD DOORS PATIOS

**1.4**  
**W/(m²K)**  
**U-VALUE**

Double glazed

**1.1**  
**W/(m²K)**  
**U-VALUE**

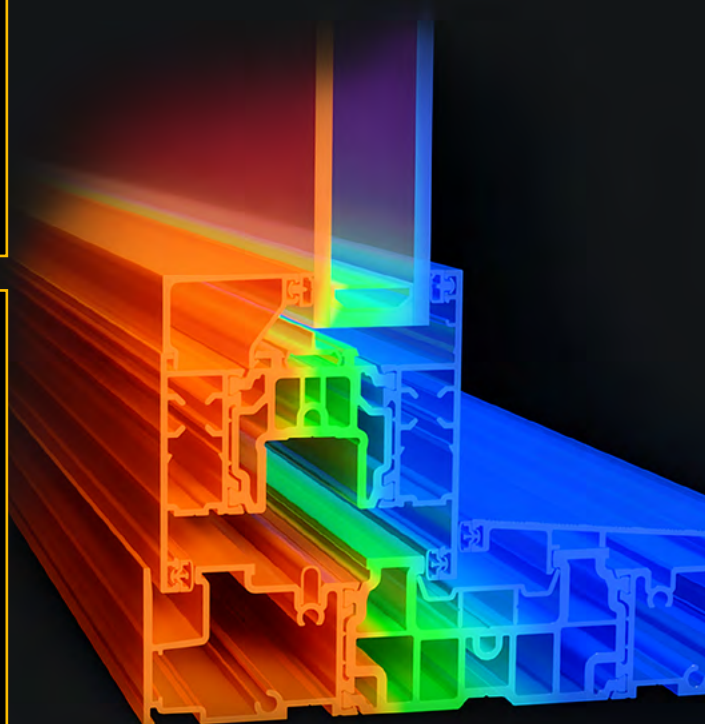
Triple glazed

AVAILABLE WITH UP TO  
**36mm TRIPLE GLAZING**  
FOR ULTIMATE THERMAL  
PERFORMANCE

**1.0**  
**W/(m²K)**  
**U-VALUE**

Triple glazed

AVAILABLE WITH UP TO  
**44mm TRIPLE GLAZING**  
FOR ULTIMATE THERMAL  
PERFORMANCE



PATIO DOORS



# SASH STYLE

Aura aluminium windows are available in a choice of two opening sash styles:

SQUIRREL GREY  
RAL: 7000

CLASSIC  
CONTEMPORARY  
FLUSH

AURA PRESTIGE

AURA CLASSIC **STEEL-LOOK**

CONTEMPORARY FLUSH



STEPPED FLUSH





# CLASSIC WINDOWS

## Echoing traditional steel style

The Classic window system is an ideal replacement for traditional steel windows, for ultra-modern, minimalist renovations and extensions available in casements, french, fixed, bow and bay window styles.







## CLASSIC WINDOWS

Traditional steel-echoed style

### UNIQUE FEATURES:

- Slimmest sightlines – 59mm
- Multipoint locking
- Mitred interior look

### THERMAL U VALUE:

Double glazed 1.4 W/m<sup>2</sup>K

Triple glazed 1.1 W/m<sup>2</sup>K

### THRESHOLDS: 4

SASH STYLES: Contemporary or stepped

COLOURS: 7

### PRODUCT TYPES:

Casement, fixed, French windows

**1.4**  
W/(m<sup>2</sup>K)  
U-VALUE  
DOUBLE GLAZED

**1.1**  
W/(m<sup>2</sup>K)  
U-VALUE  
TRIPLE GLAZED

### FEATURE AS STANDARD:

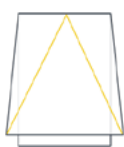
- Thermlock® multi-chamber thermal break
- 12 colours, dual colour, bespoke colour
- Patented corner construction method
- Secure By Design options on all products



DESIGNED TO COMBINE THE  
LATEST TECHNICAL INNOVATIONS  
WITH PEERLESS AESTHETICS

### CONFIGURATIONS

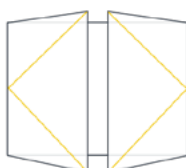
TOP HUNG



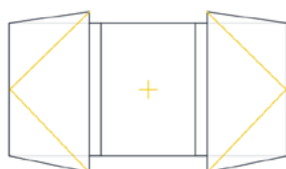
SIDE HUNG



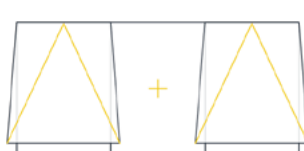
FRENCH CASEMENT



SIDE HUNG & FIXED LIGHTS



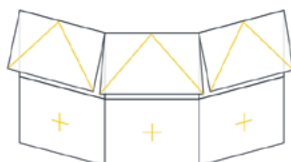
TOP HUNG & FIXED LIGHTS



MULTI LIGHT & TOP HUNG



BAY WINDOW - TOP HUNG & MULTI-LIGHTS

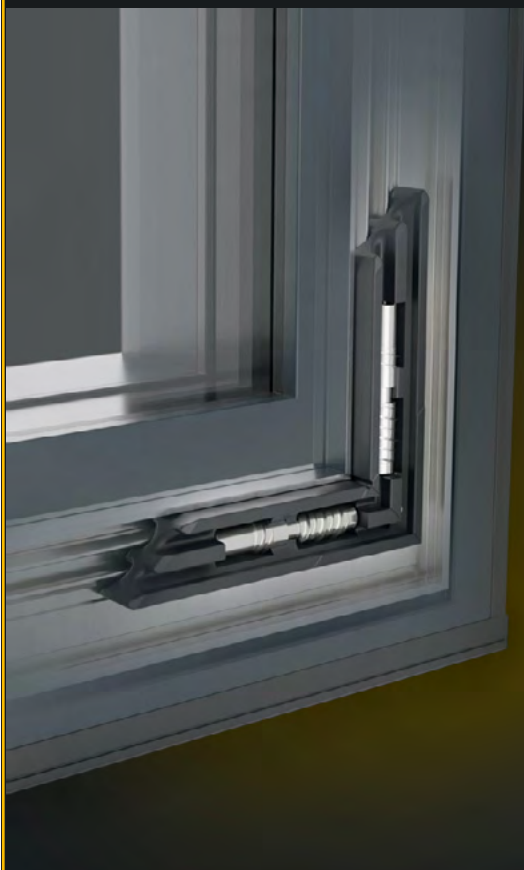




# BIFOLD DOORS

## Beautifully balanced panoramic doors

Refined, architectural styled aluminium with the latest thermal and security technology



### UNIQUE FEATURES & BENEFITS

- Slim, equal 138mm sash-to-sash sightlines
- Available up to 6.5m wide and 2.6m tall
- Configurations up to 7 panes wide
- Accommodates single and French doors
- Patented construction method provides unparalleled levels of security
- Four threshold options with full weather-sealed rebates
- Unique Thermlock® technology provides exceptional thermal performance
- Available in stepped and contemporary 'flat-faced' styles

### PATENTED CORNER CONSTRUCTION

Ensures every  
corner is square



# THIS IS HIGH PERFORMANCE ALUMINIUM



## FOUR THRESHOLD OPTIONS

All Aura bifold thresholds feature fully weather-sealed rebates.

- These rebates ensure doors aren't over-centred during operation, helping locks to engage correctly.
- Concealed drainage cleverly eliminates the need for unsightly drainage cover caps.



**CLEVERLY CONCEALED DRAINAGE**

Eliminates unsightly cover caps

## PRODUCT OVERVIEW



## BIFOLD

Panoramic fold and slide doors

### UNIQUE FEATURES:

- Up to 7 panes  
*Including 4/2/2 configurations*
- Single and French door options
- Max 6.5 x 2.6m
- Max 1.2m sash width
- Max 120kg sashes
- 80mm deep outer frame
- 72mm deep sashes
- Slim 138mm sash to sash sightlines  
*standard across all styles*
- Up to 44mm triple glazing  
*36mm on stepped sashes*

### THERMAL U VALUE:

Double glazed 1.4 W/m<sup>2</sup>K

Triple glazed 1.0 W/m<sup>2</sup>K

### THRESHOLDS: 3

### COLOURS: 7

### SASH STYLES: 2

### PRODUCT TYPES:

Bifold doors, single and French doors

**1.4**  
W/(m<sup>2</sup>K)  
U-VALUE  
DOUBLE GLAZED

**1.0**  
W/(m<sup>2</sup>K)  
U-VALUE  
TRIPLE GLAZED

### FEATURES AS STANDARD:

- Thermlock® multi-chamber thermal break
- 7 colours, dual colour, bespoke colour
- Patented corner construction method
- Secure By Design options on all products

# SMOOTH OPERATOR

Quality components – flawless operation

Every element has been engineered to operate perfectly with no aspect of the door being overlooked.

- Smooth and **reliable rolling** of the sashes is down to one-piece stainless steel tracks in the head and threshold.
- Hinges rated to **120kg** ensures **perfect alignment** of the sashes during operation due to.
- A unique tri-material gasket featuring low-friction coating maintains **smooth performance** and **reliable sealing**.





#### SINGLE ROLLERS

Custom designed single rollers eliminate the need for floating mullions

Whatever style of door, AURA bi-folds have consistent 138mm sightlines between sashes, creating a balanced look.



#### SLIM INTERNAL HANDLES

Slimline internal handles extend the clean lines, folding away when not in use.

Flush styling perfectly matches both flush windows in the range, maintaining style across a property.



#### INTEGRAL FINGER PULL LOCK

French doors (essentially a master and slave bifold door) include an integral finger pull lock eliminating the need for a second handle – continuing the clean, minimal aesthetics.

A mishandling device also ensures doors are locked in the correct order.





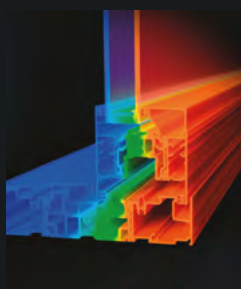
# PATIO DOORS

## High performance lift & slide panoramic door

When choosing a panoramic door the AURA Lift & Slide patio door maximises views, perfectly complementing the AURA Bi-fold door.

### FEATURES

- Contemporary or stepped sash styles to match the suite
- Exceptional thermal performance using **Thermlock®** technology
- The same **clip-in bead** system as the windows and doors
- **Part F compliant** (ventilation) via separate 25mm head vent which doubles as a frame extension
- Three weather-rated **thresholds**
- Frame can be delivered in flat pack for restricted site access
- **PAS24 accreditation** optional
- No-nonsense **Part L compliance**



Exceptional thermal performance using Thermlock® technology



Based on the Prestige range with the same clip-in bead system



Available in stepped and contemporary styles



# THE GLIDE OF YOUR LIFE

Stainless steel tracks using specially modified high-performance running gear ensures doors glide smoothly



- 1 Dual or triple track covers most requirements
- 2 Utilises bespoke Lift & Slide gearing based on a proven platform to ensure super smooth and reliable operation
- 3 All gaskets supplied with low friction coating to the contact surfaces for smooth performance and reliable sealing
- 4 Patented sealing arrangement keeps doors weathertight
- 5 Flush jambs prevent snagging and maintains clean visual lines



## PATIO DOOR

### Panoramic Lift & Slide doors

#### UNIQUE FEATURES:

- Integral drainage built into sill
- Dual and triple track
- Part F (ventilation) compliant
- Frame can be delivered flat-pack

SYSTEM SIZE: mm

#### THERMAL U VALUE:

Double glazed 1.4 W/m<sup>2</sup>K

Triple glazed 1.0 W/m<sup>2</sup>K

THRESHOLDS: 3x weather-rated

COLOURS: 7

THERMLOCK: Yes

PRODUCT TYPES: Dual and triple track

<b>1.4</b> <b>W/(m<sup>2</sup>K)</b> <b>U-VALUE</b> <small>DOUBLE GLAZED</small>	<b>1.0</b> <b>W/(m<sup>2</sup>K)</b> <b>U-VALUE</b> <small>TRIPLE GLAZED</small>
<b>MAX</b> <b>WIDTH</b> <b>6.5m</b> <small>UNJOINTED</small>	<b>MAX</b> <b>HEIGHT</b> <b>2.5m</b>
<b>MAX SASH WEIGHT</b> <b>400kg</b> <small>USING PROVEN EASY-GLIDE HARDWARE (250kg STANDARD)</small>	

#### STANDARD FEATURES

- Thermlock® multi-chamber thermal break
- 7 colours, dual colour, bespoke colour
- Patented corner construction method
- Secure By Design options on all products

TECHNICAL AREA:

# PATIO SPECIFICATION

Three weather-rated thresholds. All feature integral drainage built into end caps.

Concealed zero threshold available for seamless transition.



MAX  
WIDTH

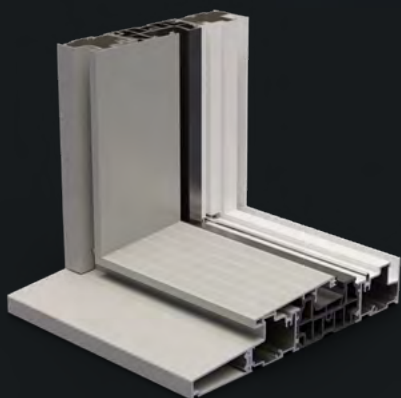
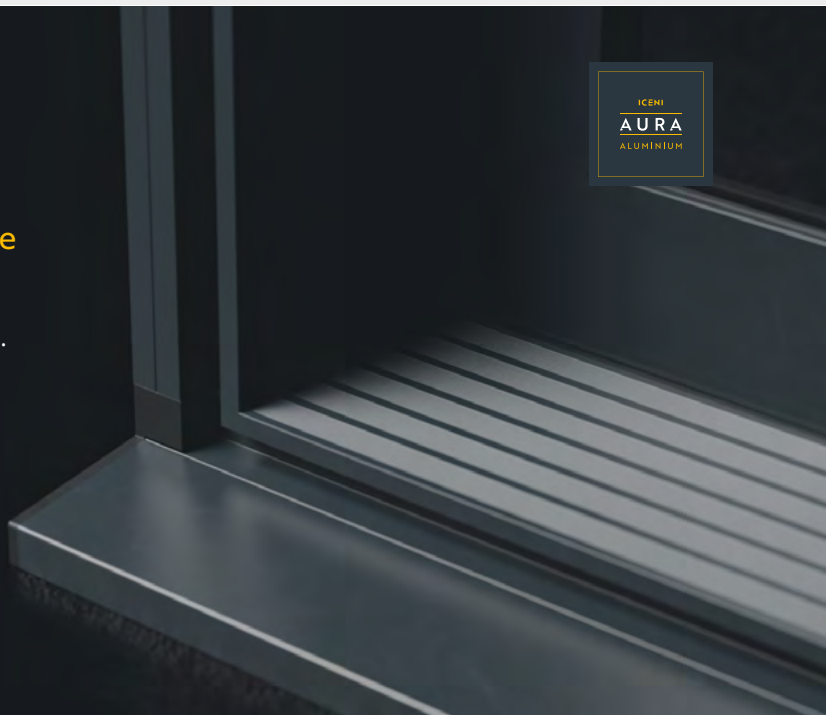
6.5m  
UNJOINTED

MAX  
HEIGHT

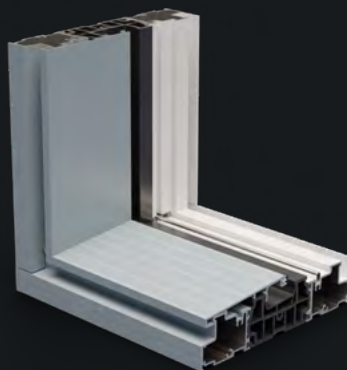
2.5m

MAX SASH  
WEIGHT\*\*

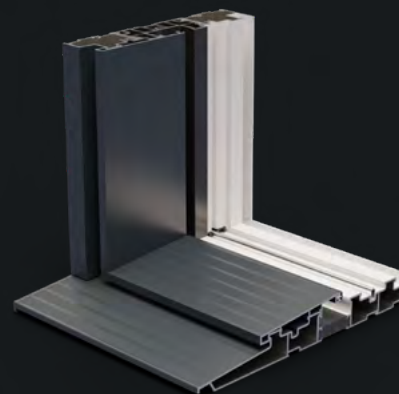
400kg



STANDARD OUTER FRAME  
with clip-on sill nose



STANDARD OUTER FRAME  
(38mm high)



LOW THRESHOLD\*  
with ramp (25mm high)

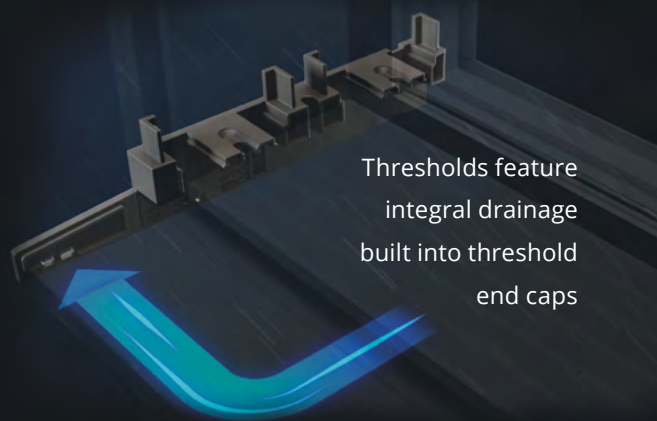
## LIFT AND DROP ASSIST

An optional *Drop Assist*<sup>1</sup> dampen the handle's rotational speed, preventing it arcing too quickly when the sliding door is lowered onto the track.

While the *Lift Assist*<sup>2</sup> helps when raising the sliding door off the track.

Both can be fitted if required and are recommended for extra-large door sashes over

<sup>1</sup>200KG / <sup>2</sup>300KG



Thresholds feature  
integral drainage  
built into threshold  
end caps

\*tested to the requirements of Part M. Only available in double track

\*\*Max sash weight is using proven easy-glide hardware (250kg standard)



## TECHNICAL AREA:

# STYLE

Available in the same style options as the rest of our high-performance aluminium range, integrating to match the whole house.



ULTRA SLIM 52MM



SLIM 80MM  
standard

## SLIM, STYLISH

Slim, minimal looks which match the whole range and maximise glass to make the most of the expansive views.

- Available with **contemporary and stepped sash** to perfectly match the rest of the Sheerline range
- Super slim sightlines of **106mm** frame & sash
- **20-31%** slimmer than market competitors
- **Ultra slim sightlines** with interlocks as slim as 52mm

### INTERLOCKS:

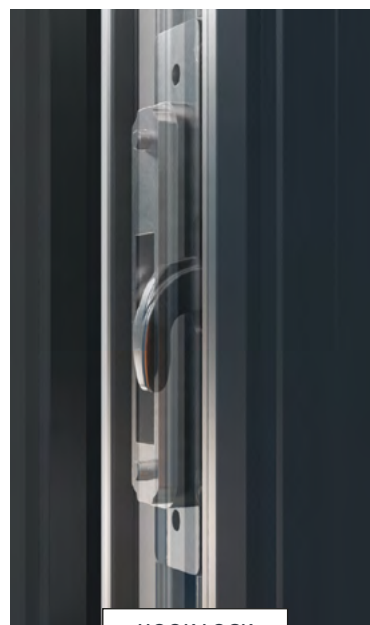
- **80mm** as standard
- **52mm** ultra slim option

## ...AND SECURE

- A unique **retracting hook-lock** with **flush-fitting keeps** eliminate protruding locking pegs on jambs, for a neater look and less snagging
- **High security interlocks** bind sashes together to stop unwanted intruders. Rated to 4.5kN
- **SBD** option available



INTERLOCK



HOOK LOCK

# ENTRANCE DOORS

Thermally efficient door system



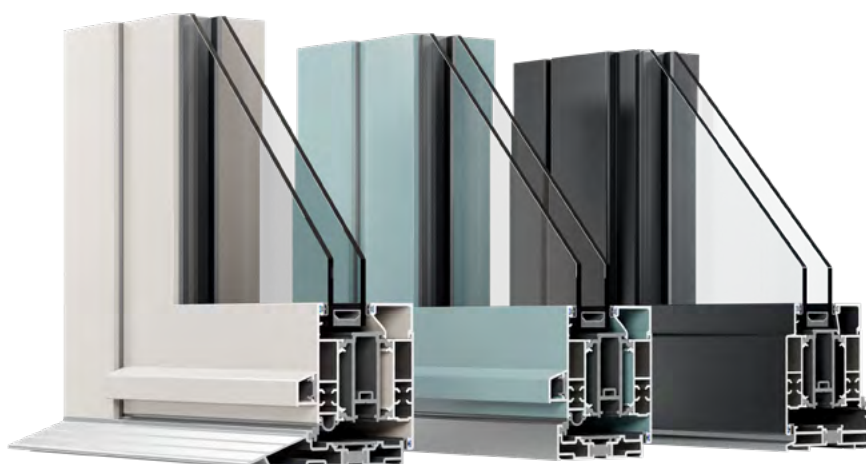


The Prestige door range is a thermally efficient system, accommodating a wide range of styles and featuring a full-depth Eurogroove, giving you the maximum choice in hardware options.

## MAKING A PERFECT ENTRANCE

High quality, innovative and versatile, Sheerline doors let light flood in to open up interiors.

The Prestige system covers both single and French doors, so you can be sure of finding the perfect entrance for your home.



## THRESHOLDS

Three thermally-broken aluminium thresholds available, (alongside continuous frame options), tested to the requirements of Part M, ensuring there's no weak point in thermal performance helping to prevent condensation.

Continuing the high end aesthetics, no fixings are visible in the threshold, and designs follow the same clean, refined looks of our windows.

### PRODUCT OVERVIEW



## ENTRANCE DOORS

Thermally efficient glazed entrance doors

### UNIQUE FEATURES:

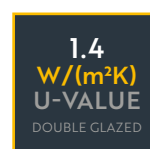
- Thermally efficient:  
Double glazed U-value 1.4 W/m<sup>2</sup>K,  
Triple glazed U-value 1.0 W/m<sup>2</sup>K
- Midrail letterbox options

### PROFILE OPTIONS

- Contemporary
- Stepped

### DOOR OPTIONS

- Single
- French doors








### STANDARD FEATURES








- Thermlock® multi-chamber thermal break
- 7 colours, dual colour, bespoke colour
- Patented corner construction method
- Secure By Design options on all products

# TECHNICAL AREA

# HARDWARE

COLOUR KEY:

AG	AB	Bla	Brz	Chr	FB
					
Anthracite Grey	Antique Black	Black	Bronze	Chrome	Forged Black

																	
Balmoral Lever/Lever Handle						Balmoral Lever/Pad Handle						Balmoral Swan Lever Handle					
AG	AB	Bla	Brz	Chr	FB	AG	AB	Bla	Brz	Chr	FB	AG	AB	Bla	Brz	Chr	FB
Gld	Gra	Pew	Sat	SS	Whi	Gld	Gra	Pew	Sat	SS	Whi	Gld	Gra	Pew	Sat	SS	Whi
																	
Balmoral DDA Lever Handle						Balmoral Blanking plate						Heritage Lever Handle					
AG	AB	Bla	Brz	Chr	FB	AG	AB	Bla	Brz	Chr	FB	AG	AB	Bla	Brz	Chr	FB
Gld	Gra	Pew	Sat	SS	Whi	Gld	Gra	Pew	Sat	SS	Whi	Gld	Gra	Pew	Sat	SS	Whi
																	
Architectural Lever Handle						Monkey Tail Lever Handle						Noble Lever Handle					
AG	AB	Bla	Brz	Chr	FB	AG	AB	Bla	Brz	Chr	FB	AG	AB	Bla	Brz	Chr	FB
Gld	Gra	Pew	Sat	SS	Whi	Gld	Gra	Pew	Sat	SS	Whi	Gld	Gra	Pew	Sat	SS	Whi
																	
Regal Lever Handle						Round Door Knob						Cylinder Escutcheons					
AG	AB	Bla	Brz	Chr	FB	AG	AB	Bla	Brz	Chr	FB	AG	AB	Bla	Brz	Chr	FB
Gld	Gra	Pew	Sat	SS	Whi	Gld	Gra	Pew	Sat	SS	Whi	Gld	Gra	Pew	Sat	SS	Whi



Gld	Gra	Pew	Sat	SS	Whi
Gold	Graphite	Pewter	Satin	Stainless Steel	White

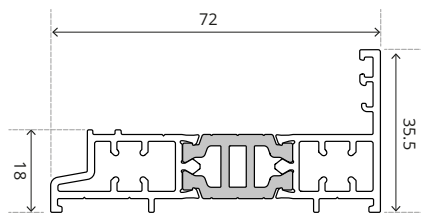
<b>Pembroke Patio (standard)</b> Patio door handle	<b>Straight Slide Patio (option 1)</b> Patio door handle	<b>Window Handle</b>
AG AB Bla Brz Chr FB Gld Gra <b>Pew</b> Sat SS Whi	AG AB Bla Brz Chr FB Gld Gra Pew Sat <b>SS</b> Whi	AG AB Bla Brz Chr FB Gld Gra <b>Pew</b> Sat <b>SS</b> Whi

<b>Monkey Tail Handle</b>	<b>Pear Drop Handle</b>	<b>Architectural Handle</b>
AG AB Bla Brz Chr FB Gld Gra <b>Pew</b> Sat SS Whi	AG AB Bla Brz Chr FB Gld Gra Pew Sat <b>SS</b> Whi	AG AB Bla Brz Chr FB Gld Gra Pew Sat <b>SS</b> Whi

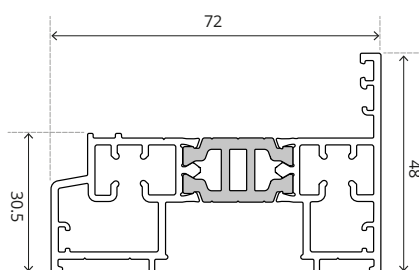
<b>Tilt &amp; Turn handle</b>	
AG AB Bla Brz Chr FB Gld Gra <b>Pew</b> Sat <b>SS</b> Whi	

# PROFILE & CONFIGURATIONS

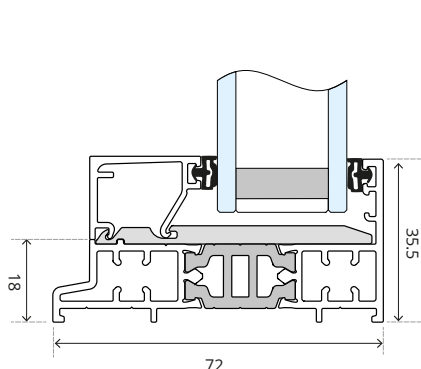
## OUTERFRAMES



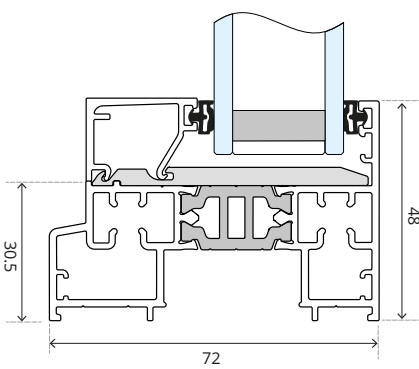
SMALL OUTERFRAME



INTERMEDIATE OUTERFRAME

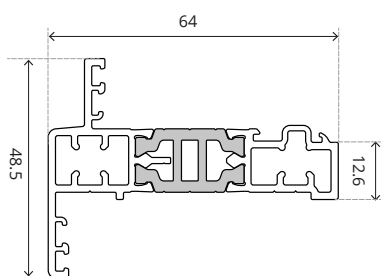


SMALL OUTERFRAME  
GLAZED

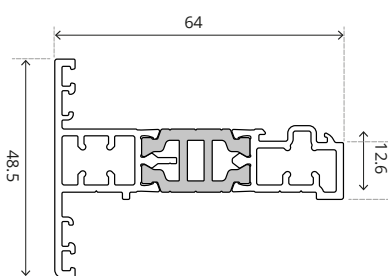


INTERMEDIATE OUTERFRAME  
GLAZED

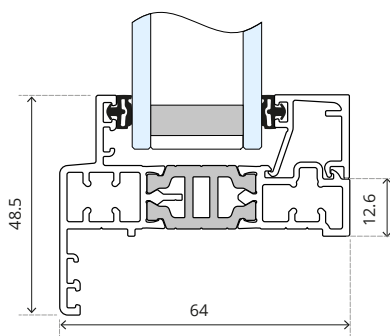
## SASHES



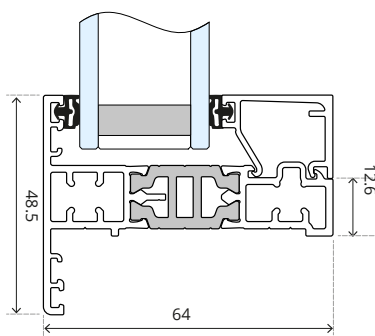
STEPPED SASH



CONTEMPORARY SASH

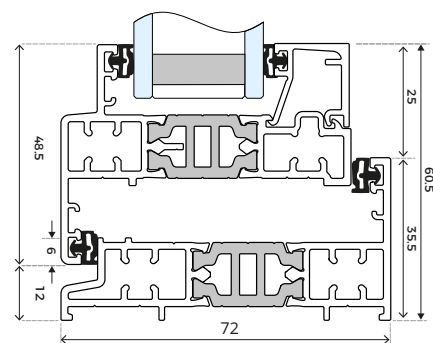


STEPPED SASH  
GLAZED

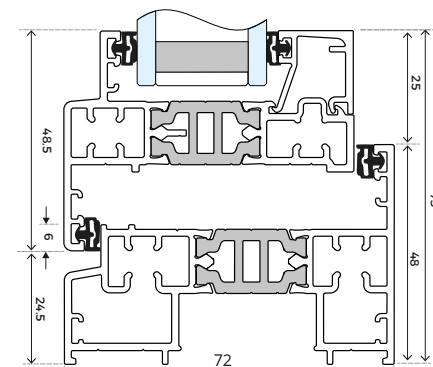


CONTEMPORARY SASH  
GLAZED

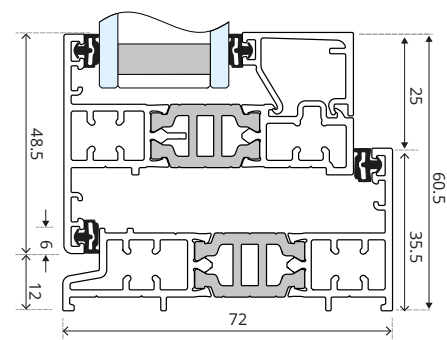
## COMBINATIONS



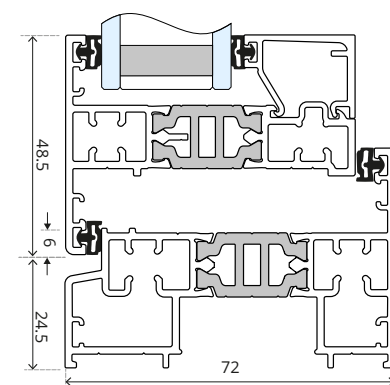
SMALL OUTERFRAME  
+ STEPPED SASH



INTERMEDIATE OUTERFRAME  
+ STEPPED SASH



SMALL OUTERFRAME  
+ CONTEMPORARY SASH

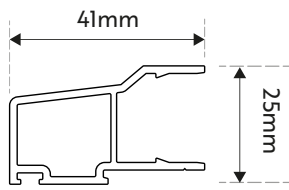


INTERMEDIATE OUTERFRAME  
+ CONTEMPORARY SASH

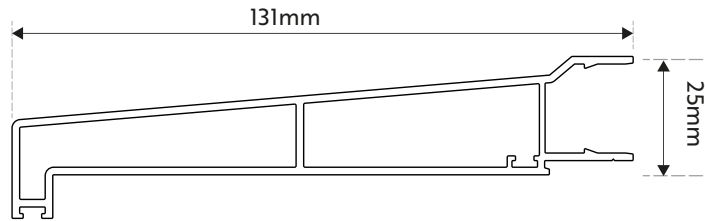
NOT TO SCALE. PLEASE NOTE: All beads are square. Bead type used is decided by; a) The chosen sash and b) the glass depth. View triple glazed options on our website.



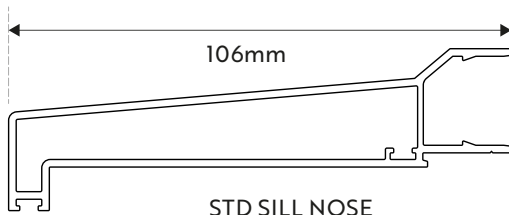
# SILLS AND COUPLERS



STUB SILL NOSE  
SA010



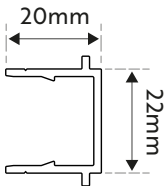
LARGE SILL NOSE  
SA012



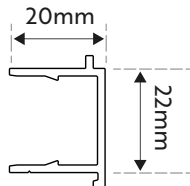
STD SILL NOSE  
SA011



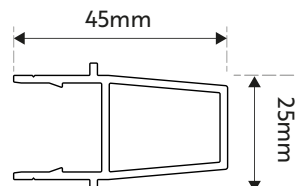
SILL PROTECTOR  
SA516



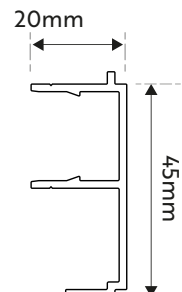
STD COUPLER TRIM  
SA013



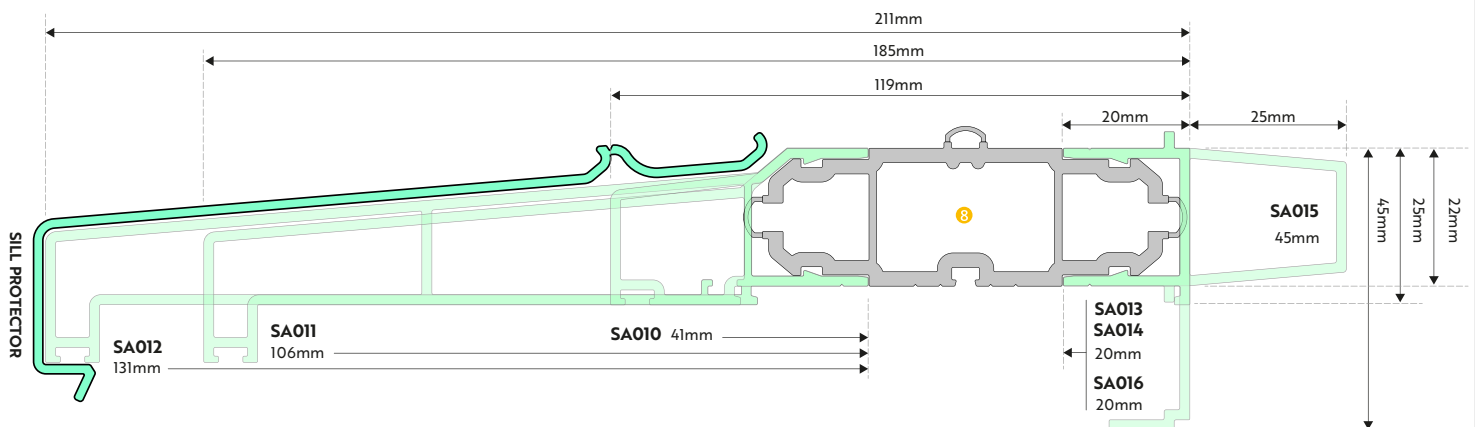
HD COUPLER TRIM  
SA014



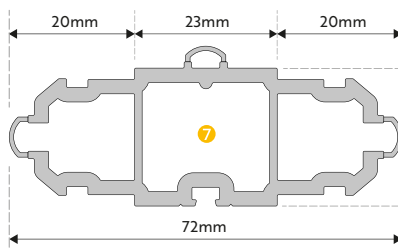
INTERNAL SILL / 25mm EXT TRIM  
SA015



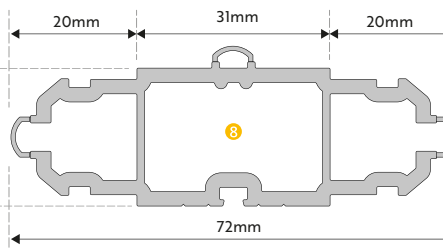
45mm EXT TRIM  
SA016



SA503 64mm THERMAL COUPLER

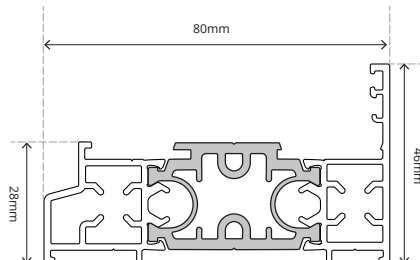


SA504 72MM THERMALCOUPLER

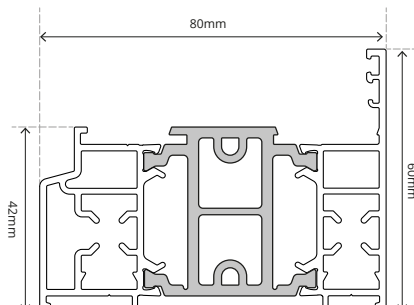


NOT TO SCALE

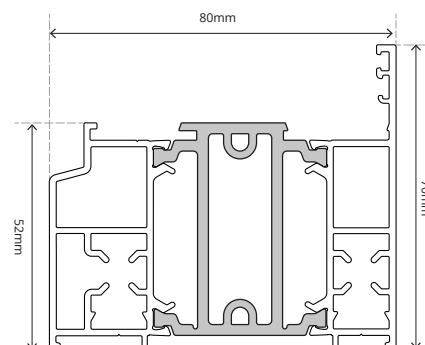
# PROFILE DIAGRAMS



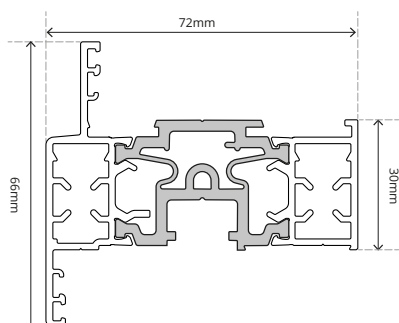
SMALL OUTERFRAME



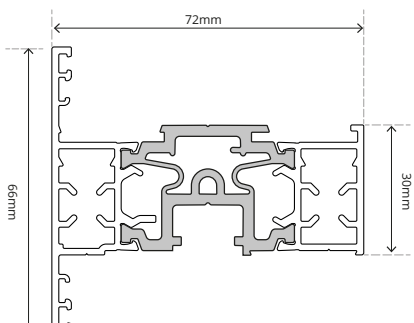
INTERMEDIATE OUTERFRAME



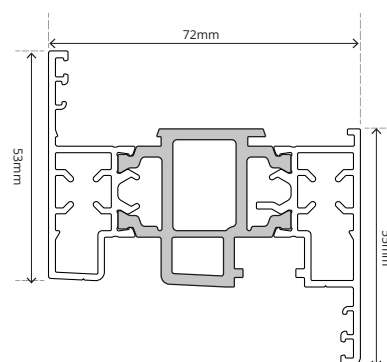
LARGE OUTERFRAME



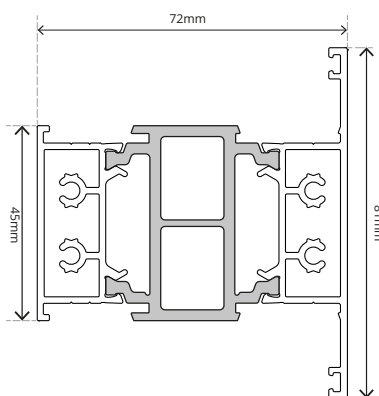
STEPPED SASH



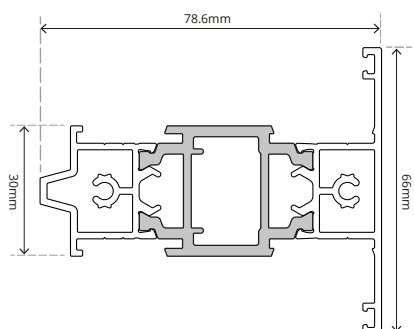
CONTEMPORARY SASH



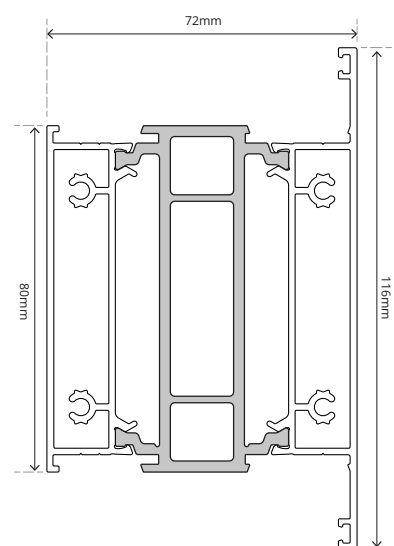
TILT AND TURN SASH



INTERMEDIATE  
TRANSOM/MULLION

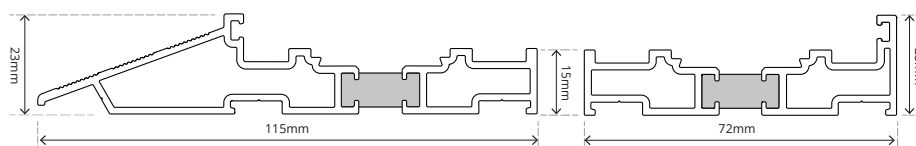


TRANSOM/MULLION

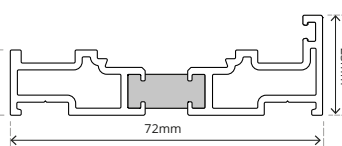


MIDRAIL

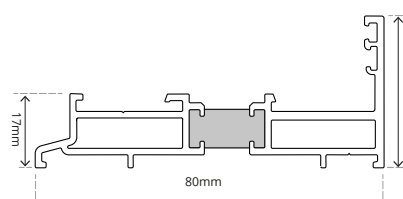
## THRESHOLDS Tested to the requirements of Part M



LOW THRESHOLD WITH RAMP



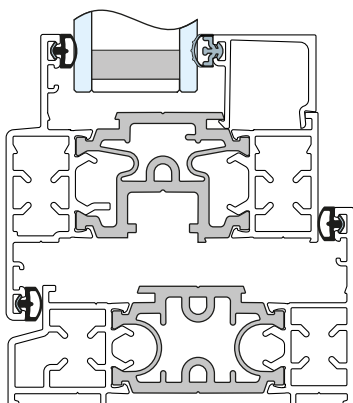
LOW THRESHOLD



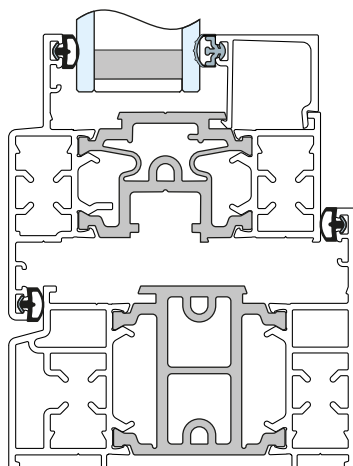
FRAME LOW THRESHOLD



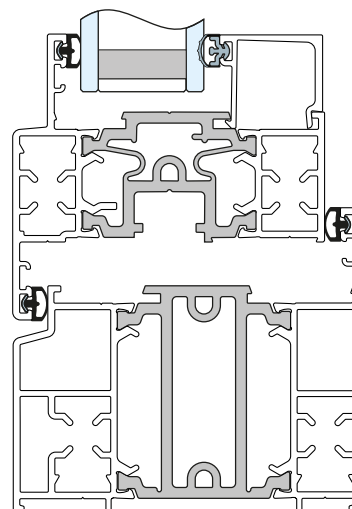
# PROFILE COMBINATIONS



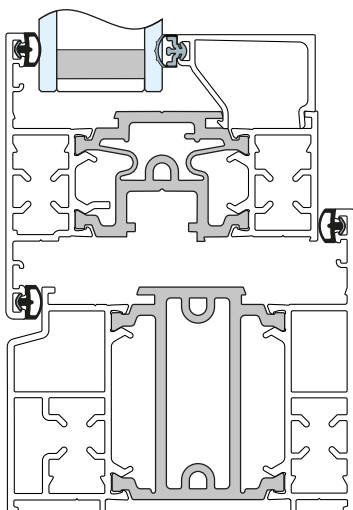
STEPPED SASH  
+ SMALL OUTERFRAME



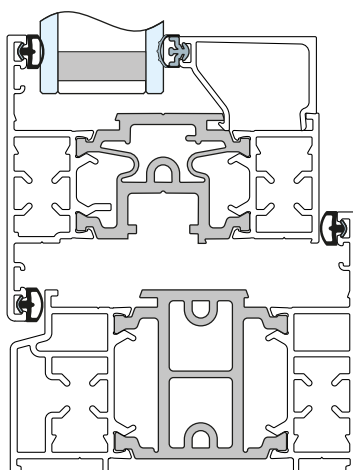
STEPPED SASH  
+ INTER OUTERFRAME



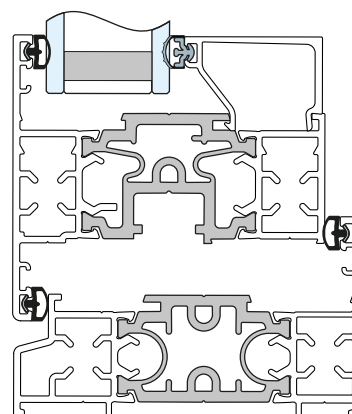
STEPPED SASH  
+ LARGE OUTERFRAME



CONTEMPORARY SASH  
+ LARGE OUTERFRAME

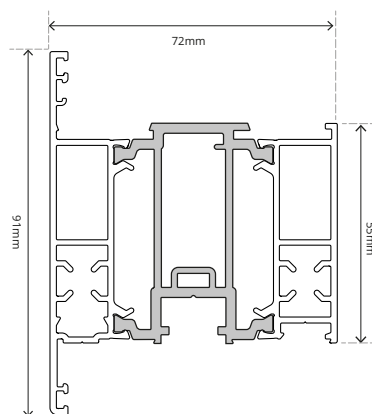


CONTEMPORARY SASH  
+ INTER OUTERFRAME

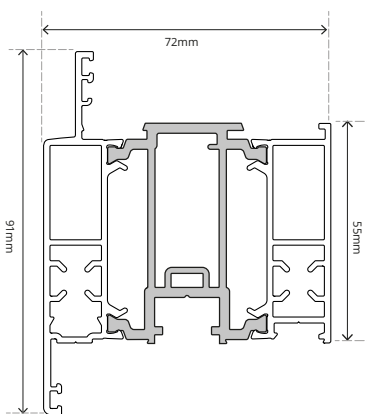


CONTEMPORARY SASH  
+ SMALL OUTERFRAME

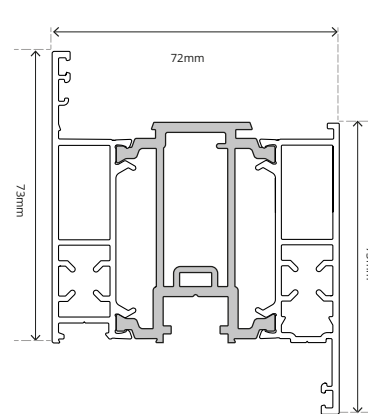
## DOOR PROFILE



'T' DOOR SASH



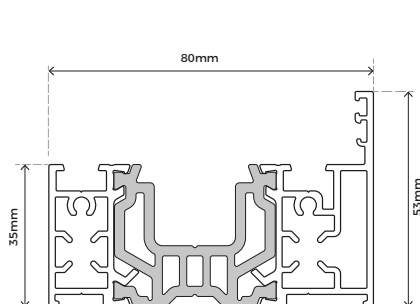
STEPPED  
'T' DOOR SASH



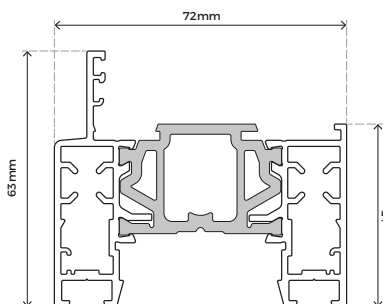
'Z' DOOR SASH

NOT TO SCALE. PLEASE NOTE: All beads are square. Bead type used is decided by; a) The chosen sash and b) the glass depth.

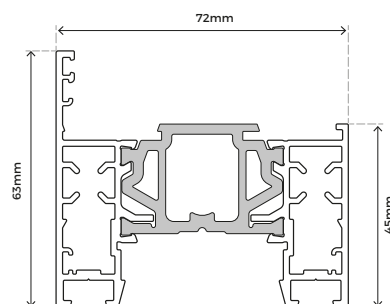
# BIFOLD SCHEMES / CONFIGURATIONS



**SBF100**  
OUTER FRAME

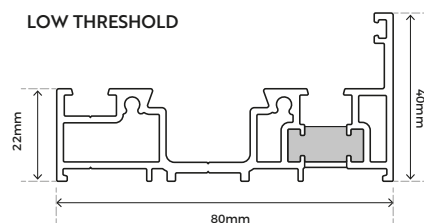


**SBF300**  
STEPPED SASH

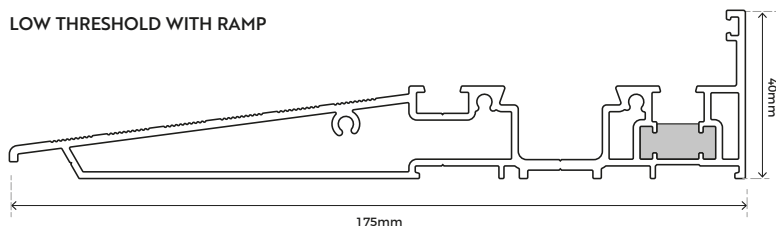


**SBF301**  
CONTEMPORARY SASH

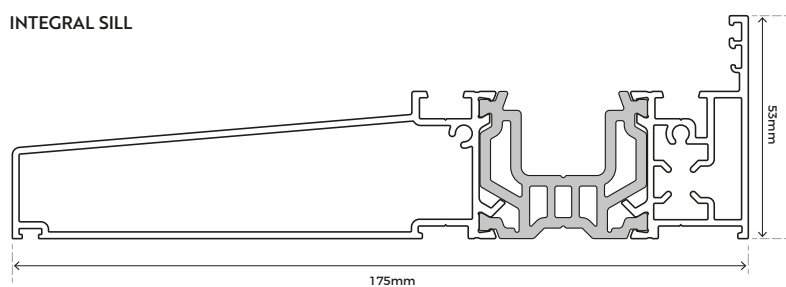
LOW THRESHOLD



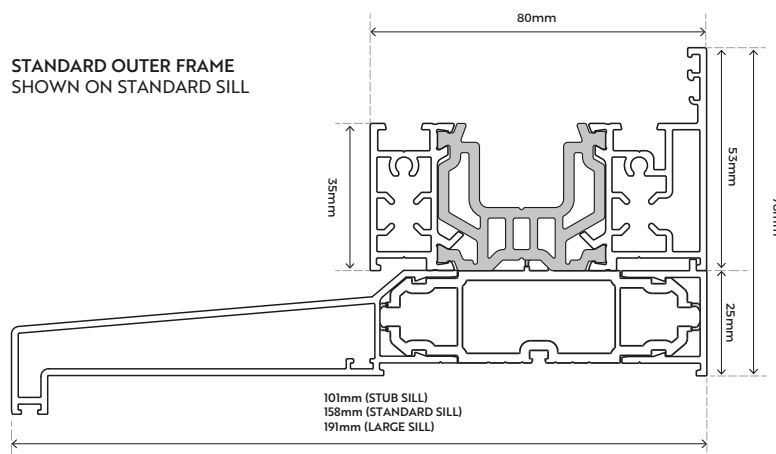
LOW THRESHOLD WITH RAMP



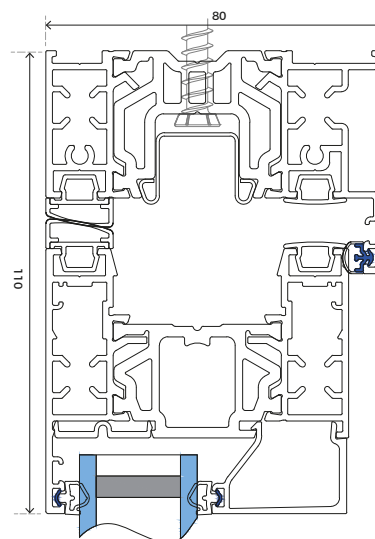
INTEGRAL SILL



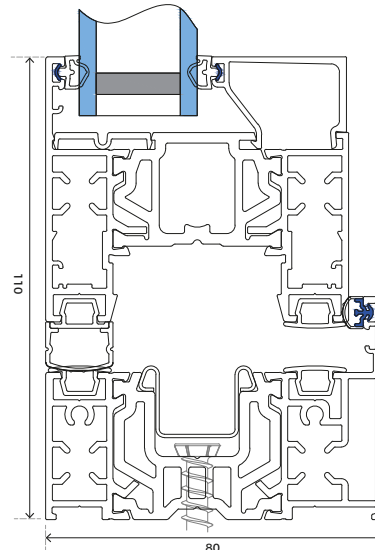
STANDARD OUTER FRAME  
SHOWN ON STANDARD SILL



TYPICAL ARRANGEMENT:  
HEAD

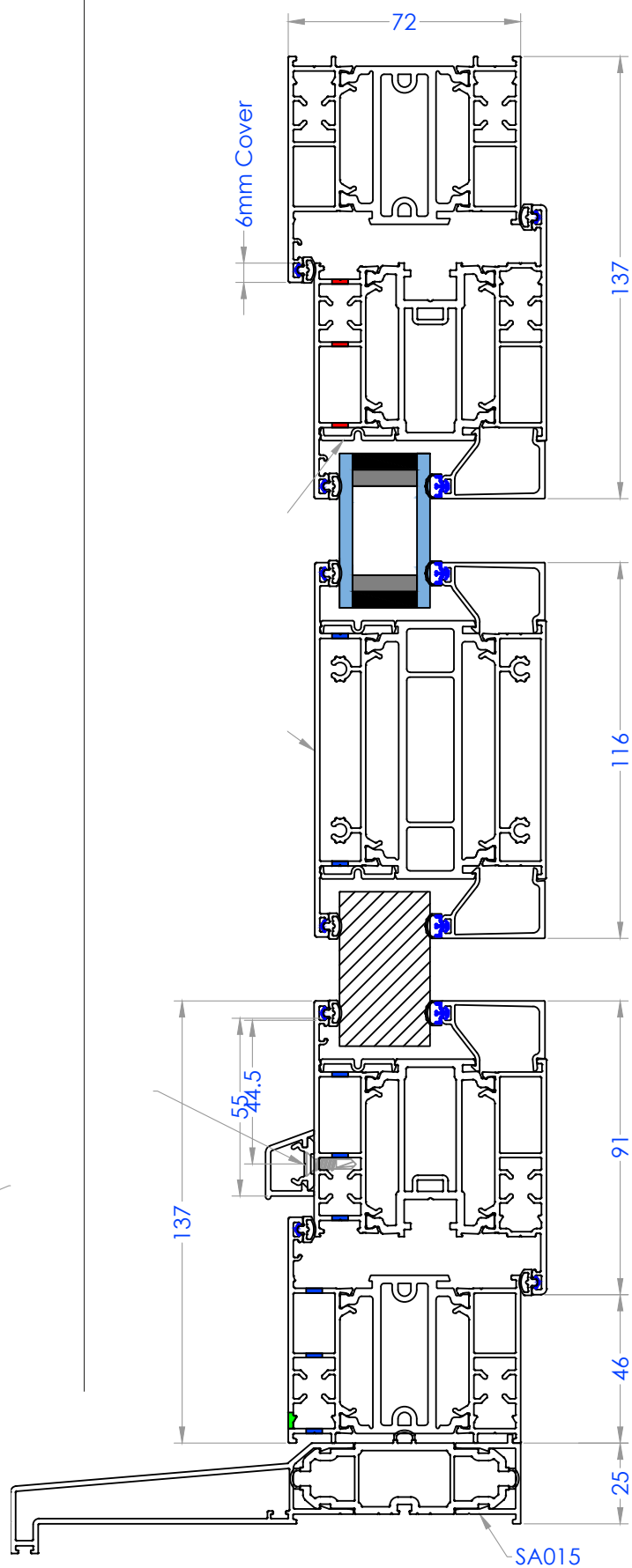
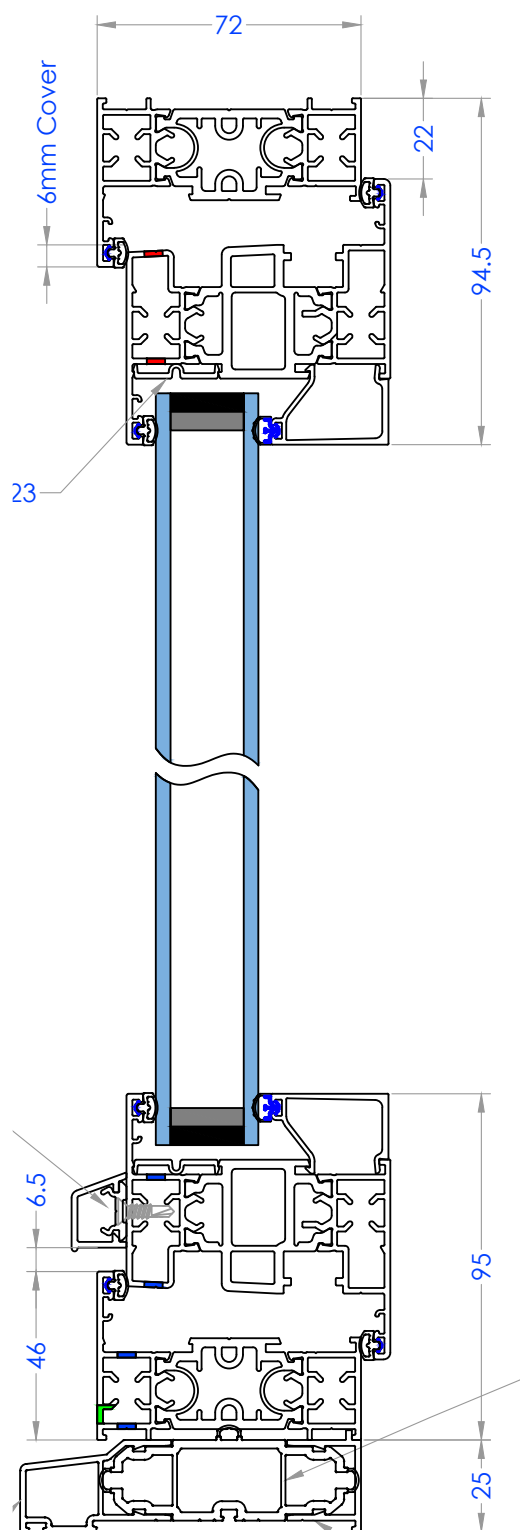


TYPICAL ARRANGEMENT:  
FRAME THRESHOLD

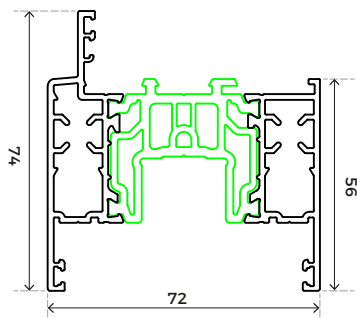




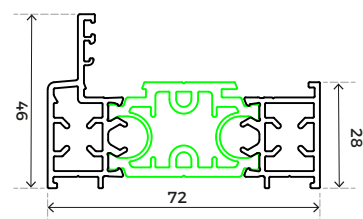
## TILT 'N' TURN & RESI DOOR



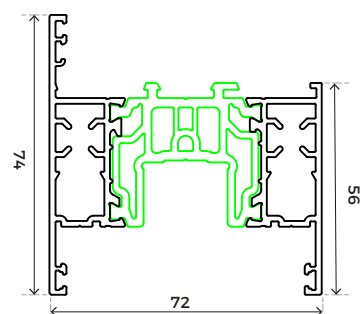
# PROFILE / THRESHOLDS



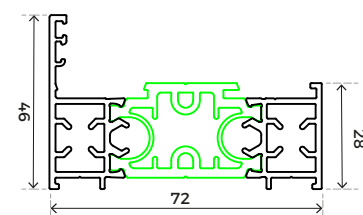
STEPPED SASH



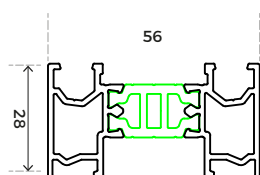
SMALL STEPPED OUTERFRAME



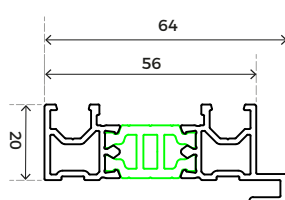
CONTEMPORARY SASH



SMALL OUTERFRAME

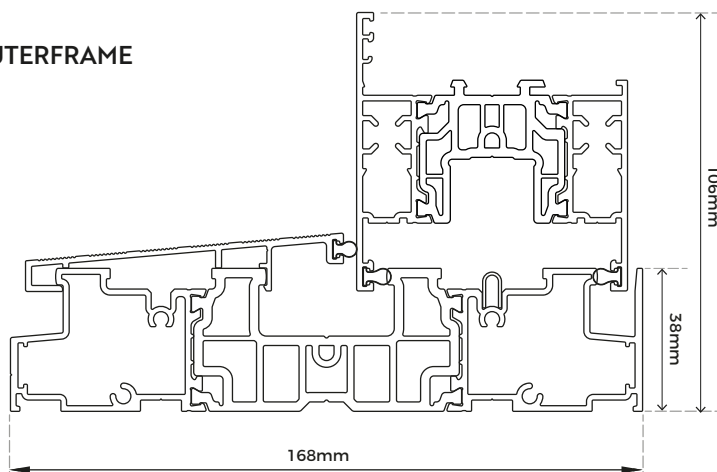


4 PANE ADAPTOR

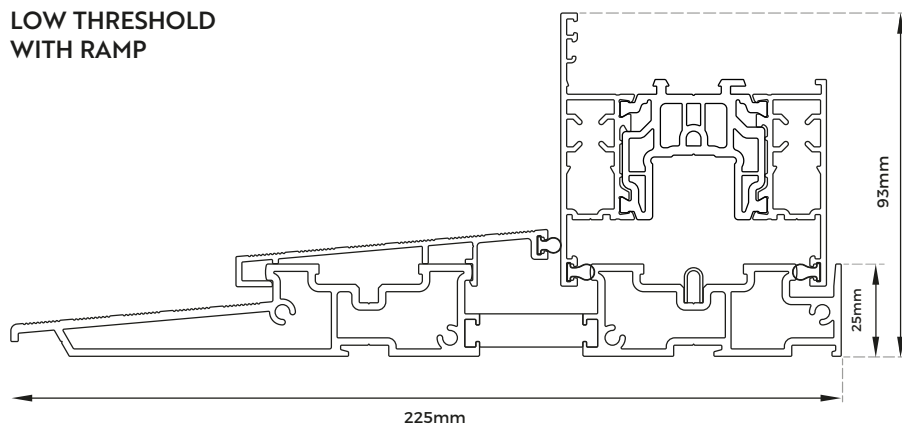


JAMB EXTENSION

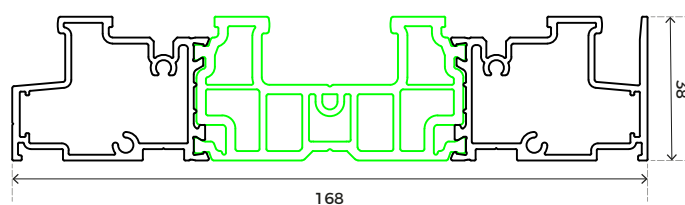
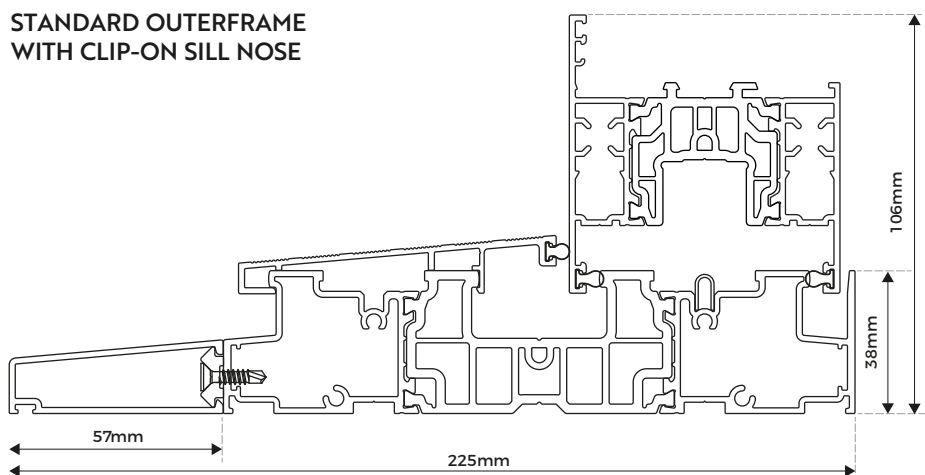
STANDARD OUTERFRAME



LOW THRESHOLD WITH RAMP



STANDARD OUTERFRAME WITH CLIP-ON SILL NOSE



2 PANE STANDARD FRAME



# TECHNICAL AREA: AURA PRODUCT SPECIFICATIONS

## DESIGN LIMITATIONS AND PERFORMANCE CHARACTERISTICS - BS6375-1&2

### CLASSIC WINDOWS

WINDOW TYPE	Min width (mm)	Min height (mm)	Max width (mm)	Max height (mm)	Max Perimeter (mm)	Max weight (kg)	Air (Pa)	Water (Pa)	Wind (Pa)
Top Hung	400	350	1300	1225	5050	50	Class 2	Class 7A	Class CE2400
Side Hung	350	400	710	1450	4320	40	Class 4	Class E750	Class CE2400
French Casement	350	400	710	1450	-	40	-	-	-
Fixed Dummy	350	350	1500	2100	-	-	Class 2	Class 7A	Class CE2400
Sash dimensions for windows with approved sash profiles:									
Projecting top hung	-	-	1300	1225	5050	-	Class 2	Class 7A	Class CE2400
Projecting side hung	-	-	710	4320	4320	-	Class 4	Class E750	Class CE2400
Overall dimensions for windows with approved outerframe profiles:									
Dummy vent	-	-	740	5620	5620	-	Class 2	Class 7A	Class CE2400
Fixed light	-	-	740	5620	5620	-	Class 4	Class 7A	3A
Multilight	-	-	1500	7200	7200	-	Class 2	Class 7A	Class CE2400

\* Max sizes are overall sash sizes. The max sizes on the fixed dummy sash are interchangeable allowing you to achieve a window size of 2100w x 1470h.

### PRESTIGE WINDOWS

WINDOW TYPE	Min width (mm)	Min height (mm)	Max width (mm)	Max height (mm)	Max Perimeter (mm)	Max weight (kg)	Air (Pa)	Water (Pa)	Wind (Pa)
Top Hung	380	330	1430	1260	-	Refer to hinge supplier specifications	Class 3	Class 8A	Class 4C
Side Hung	330	380	710	1450	-		Class 4	Class 9A	Class CE2400
French Casement	330	380	710	1450	-		Class 4	Class 9A	Class CE2400
Residential Door	600	-	1000	2500	-		Class 2	Class 2A	Class C3
French Door	600	-	1000	2500	-		Class 4	Class 2A	Class C3
Tilt & Turn	460	500	1428	1428	-		Class 4	Class 7A	Class CE2400
Fixed light	-	-	740	2040	-				

\* Sizes are overall sash sizes, unless otherwise stated

Sash dimensions for for windows with approved sash profiles:			Max W (mm)	Max H (mm)	Max P (mm)		Air (Pa)	Water (Pa)	Wind (Pa)
Projecting top hung	-	-	1430	1260	5380	-	Class 3	Class 8A	-
Projecting side hung	-	-	710	1450	4320	-	Class 4	Class 9A	-
Tilt & Turn	-	-	1430	1430	5720	-	Class 4	Class 7A	-
Overall dimensions for for windows with approved outerframe profiles:			Max W (mm)	Max H (mm)	Max P (mm)		Air (Pa)	Water (Pa)	Wind (Pa)
Fixed light	-	-	740	2070	5620	-	Class 4	Class 7A	-
Multilight consisting fixed light	-	-	1470	1470	2.03	-	Class 4	Class 7A	-
Multilight consisting top hung opener	-	-	1470	1470	2.03	-	Class 3	Class 8A	-
Multilight side hung next to side hung	-	-	1470	1470	2.03	-	Class 4	Class 9A	-

### BIFOLDING DOORS

TYPE	Min width (mm)	Min height (mm)	Max width (mm)	Max height (mm)	Perimeter	Max weight (kg)	Air (Pa)	Water (Pa)	Wind (Pa)
Bifold	800	1900	1200	2500	-	-	-	-	-
Sash open-in	600	1860	1220	2520	-	120	Class 2	Class 4A	C2
Sash open-out	600	1860	1220	2520	-	120	Class 4	Class 7A	A3
3 panes open-in (overall)	-	-	3800	2600	-	-	-	-	-
3 panes open-out (overall)	-	-	3800	2600	-	-	-	-	-

All calculations are undertaken with the use of Winlso (2.7.0) based on a 1230 x 1480 window as specified by BS EN 14351.

### RESIDENTIAL DOOR LEAVES

TYPE	Min width (mm)	Min height (mm)	Max width (mm)	Max height (mm)	Perimeter	Max weight (kg)	Air (Pa)	Water (Pa)	Wind (Pa)
Single leaf (overall)	-	-	1100	2600	-	-	2	2A	C3
Active leaf	-	-	1005	2500	-	-	2	2A	C3
Single leaf (overall) SP702	-	-	1100	2557	-	-	2	5A	C3
Active leaf	-	-	1008	2500	-	-	2	5A	C3
Double leaf (overall)	-	-	2100	2555	-	-	4	2A	C3
Master leaf	-	-	1005	2500	-	-	4	2A	C3
Slave leaf	-	-	1040	2500	-	-	4	2A	C3

### PATIO DOORS

Max overall width	6500mm	Sash height (mm)	Standard interlock Max Sash width (mm)	Slim interlock Max Sash width (mm)
		2500 (max)	1600	n/a
Max overall height	2500mm	2400	1900	1300
		2300	2400	1600
		2200	3000	2000
Max Sash weight	250kg/ 400kg (upgrade)	2100	3250	2600

## VIEW OUR OTHER PRODUCTS



Scan for all  
brochures



AURA ALUMINIUM IS FABRICATED  
BY ICENI FROM SHEERLINE



Scan to check if  
this brochure is  
the most recent

VERSION: 1.0



• THE •  
MASTER MANUFACTURERS

[www.iceniwindows.co.uk](http://www.iceniwindows.co.uk)