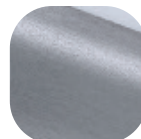


Doctors Knocker



Features

- **Early Georgian period design**
Luxurious heavyweight design to create an elegant finish to a heritage style door
- **Supplied in concealed fix specifications**
- **Suitable for Timber, Composite and PVCu doors**
Fully suites to our Perfectly Matching range of hardware



Hardex
Graphite



Hardex
Chrome



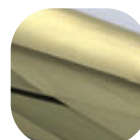
Anthracite
Grey



Black



Hardex
Bronze



Hardex
Gold



Concealed Fix

Doctors Knocker

Ordering Details

Product	Part No.	
Doctors Knocker		
Finish	Through Fix	Concealed Fix
Hardex Chrome	DFNKNDKHC-TF	DFNKNDKHC-CF
Hardex Gold	DFNKNDKHG-TF	DFNKNDKHG-CF
Hardex Bronze	DFNKNDKHB-TF	DFNKNDKHB-CF
Hardex Graphite	DFNKNDKGR-TF	DFNKNDKGR-CF
Anthracite Grey	DFNKNDKAG-TF	DFNKNDKAG-CF
Black	DFNKNDKBK-TF	DFNKNDKBK-CF

Technical Information

Corrosion resistance

Meets the requirements of BS EN 1670 Grade 5 (480 hours)

Material Specification

Knocker:	High quality Zinc
Coatings:	Hardex Chrome, Hardex Gold, Hardex Bronze, Hardex Graphite, Anthracite Grey and Black.
Fixing Brackets:	Steel

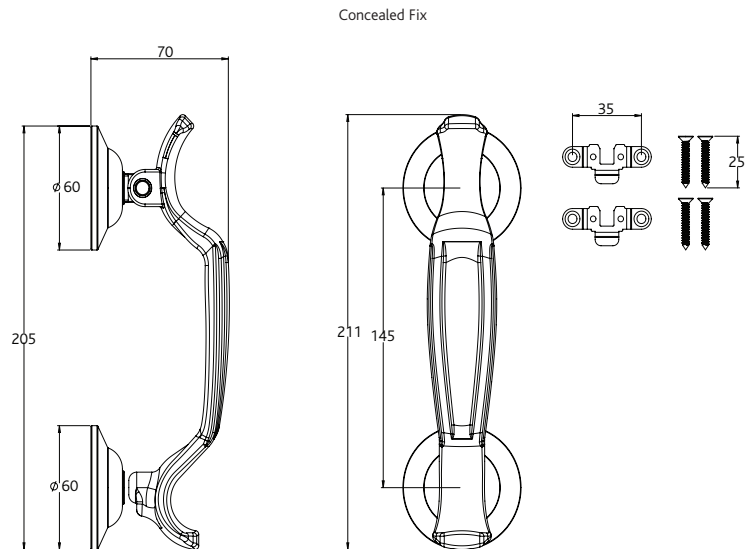
Maintenance

For continued protection of the quality finish and appearance, we advise routine cleaning of all our external hardware. We recommend wiping it with a clean cloth soaked in warm water and mild detergent every month. Please refrain from using heavy-duty cleaners, containing Chlorine or Potassium. Moving parts should also be lightly lubricated using a light non-acidic mineral oil (e.g., "3 in 1") at least twice per year. The product may need to be adjusted and fixings tightened to ensure a satisfactory operation. This procedure is particularly essential if products are used within a 25-mile radius of coastal areas or close proximity to building sites or large industrial areas, where more frequent cleaning may be required to prevent the accumulation of corrosive contaminants.

Packaging

Doctors Knocker

Individually boxed with fixings and care instructions.
5 knockers in an outer box.



All dimensions are in mm and are nominal. Fab&Fix reserves the right to change specification without notice. It is the responsibility of the door manufacturer to ensure that the finished product meets any required safety and performance specification.